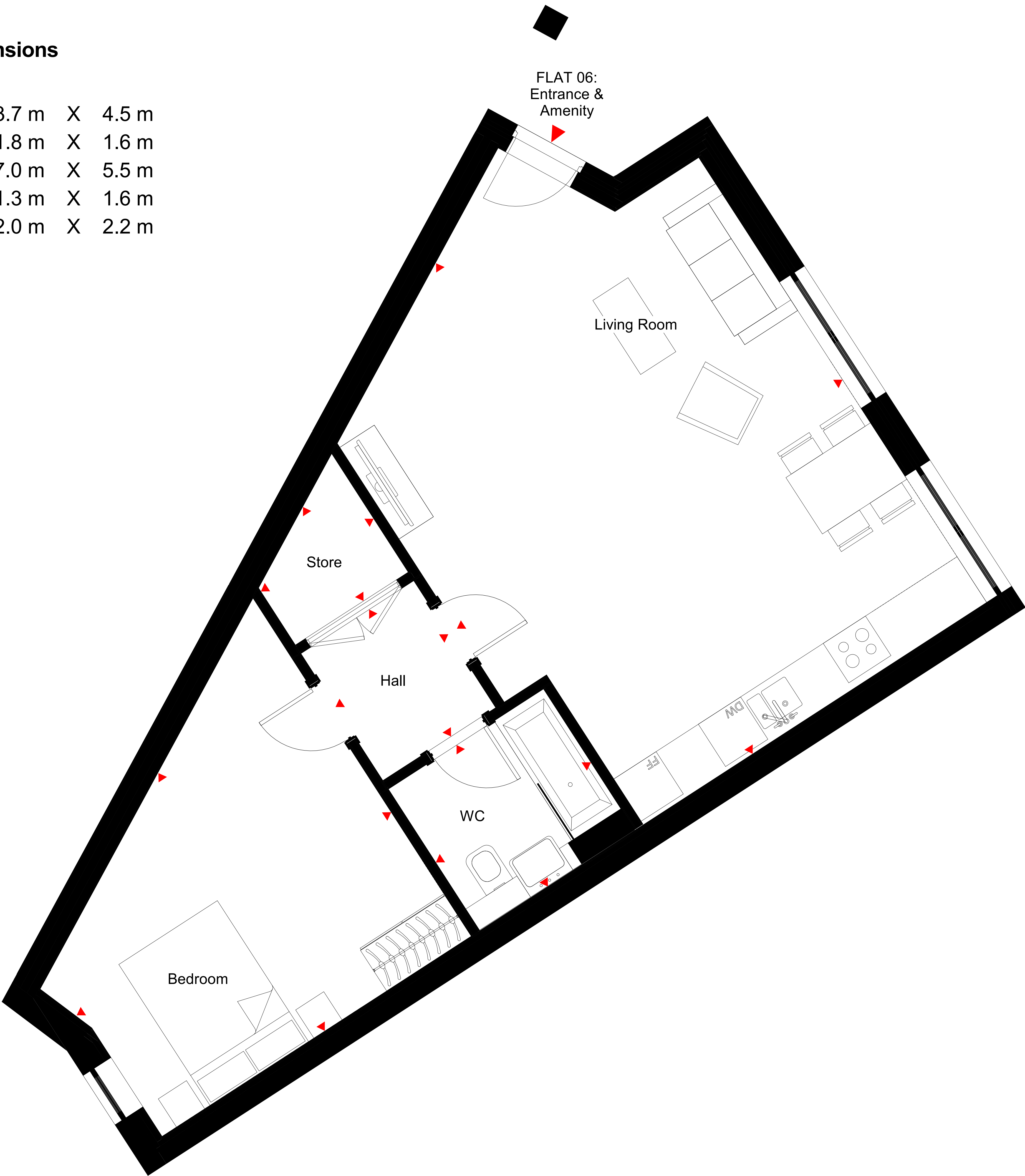
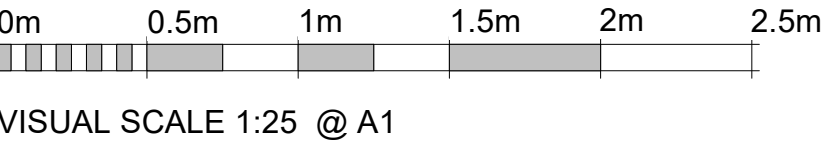


Apartment 5 - Room Dimensions

Bedroom	3.7 m	X	4.5 m
Hall	1.8 m	X	1.6 m
Living Room & Kitchen	7.0 m	X	5.5 m
Store	1.3 m	X	1.6 m
WC	2.0 m	X	2.2 m



© Socrates Architects
DO NOT SCALE DRAWINGS. USE FIGURED DIMENSIONS ONLY. ALL DIMENSIONS TO BE CHECKED ON SITE DISCREPANCIES TO BE REPORTED IMMEDIATELY TO THE ARCHITECT. FOR STRUCTURAL DIMENSIONS AND SETTING OUT SEE STRUCTURAL ENGINEERS DRAWINGS. INFORMATION NOT TO BE USED OTHER THAN AS DEFINED BY THE DRAWING STATUS. DIMENSIONS ARE DERIVED FROM DESIGN'S RECEIVED BUILDING CONTROL DWG FILE. PREFERRED OPTION TO REMOVE ALL EXISTING WOOD WOOL/STRAMIT. HOWEVER, WOOD WOOL/STRAMIT TO BE CONTAINED AS PER CLIENT INSTRUCTION.



Rev	Description	Drawn	Date	Checked

Socrates Architects

3 Bond Street, St Helier, Jersey
T: +44 (0) 1534 639773
studio@socratesarchitects.com
socratesarchitects.com

Client's Name
DOLPHIN INVESTMENTS LIMITED

Job Title
Dolphin House

Drawing Title
MARKETING - UNIT 6

Scale
1 : 25 @A1

Job No 2007700	Drawing No GA(10)-302-6
Status	Rev